

Introducing MapLogic Layout Manager™

The most powerful tool for creating map books in ArcGIS™



MapLogic Layout Manager is an extension to ArcGIS which provides all the tools necessary to create and print multiple page layouts, map series and map books within ArcMap.

This entire booklet was created within a single ArcMap document using the MapLogic Layout Manager extension for ArcGIS.

Download MapLogic Layout Manager from our website and evaluate it for 30 days!

For more information about this product contact us at:

MapLogic Corporation

330 W Canton Avenue

Winter Park, FL 32789 USA

TEL: 407-657-1250

FAX: 407-657-7008

E-Mail: marketing@maplogic.com

WEB: www.maplogic.com

MapLogic

WELCOME

MapLogic Corporation is pleased to introduce you to MapLogic Layout Manager, a new and powerful map book extension for ArcGIS.

Throughout this booklet we will show you examples of the different types of maps and layouts the MapLogic Layout Manager can create as well as some of the options available with each of these maps.

In fact this entire booklet was created within a single ArcMap document using the MapLogic Layout Manager. The example table of contents on this page (right) is from this booklet's ArcMap document.

We are using the City of Winter Park, Florida (where our offices are located) as an example to show you what you can do with the this extension.

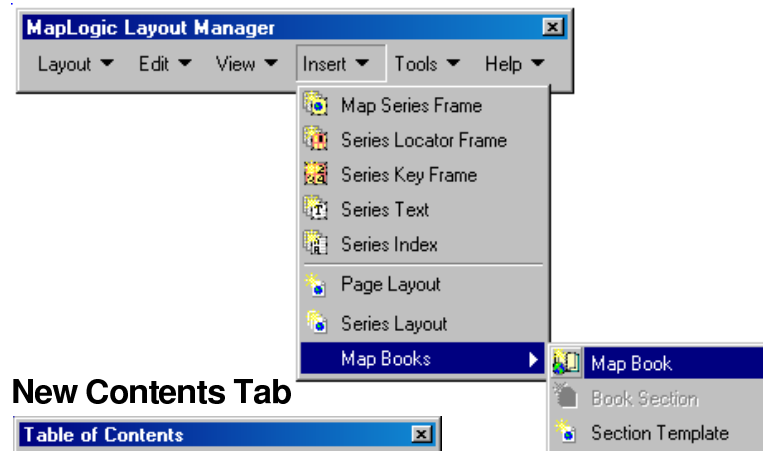
With this extension you will be able to automate the process of creating multiple layouts, map series and map books within ArcMap.

With its unsurpassed collection of tools and options, this extension will help you create professional looking map books with all the necessary details such as Key maps, locator maps, location indexes and page numbers.

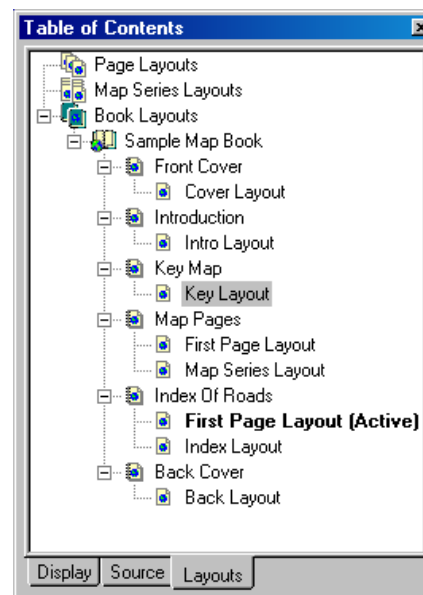
MapLogic Layout Manager adds three new components to ArcMap:

1. A new toolbar which allows you to access all of the extension's specialized tools.
2. A new tab called "Layouts" in your table of contents which allows you to create and store an unlimited number of layouts and map books in your ArcMap document.
3. New properties for data frames and elements in your layout which allow you to set map book related properties.

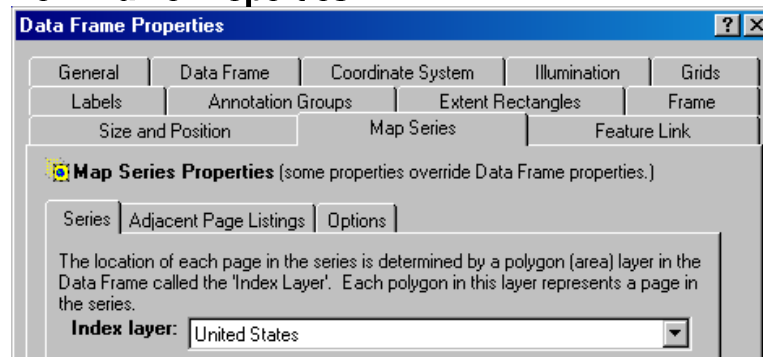
New Toolbar

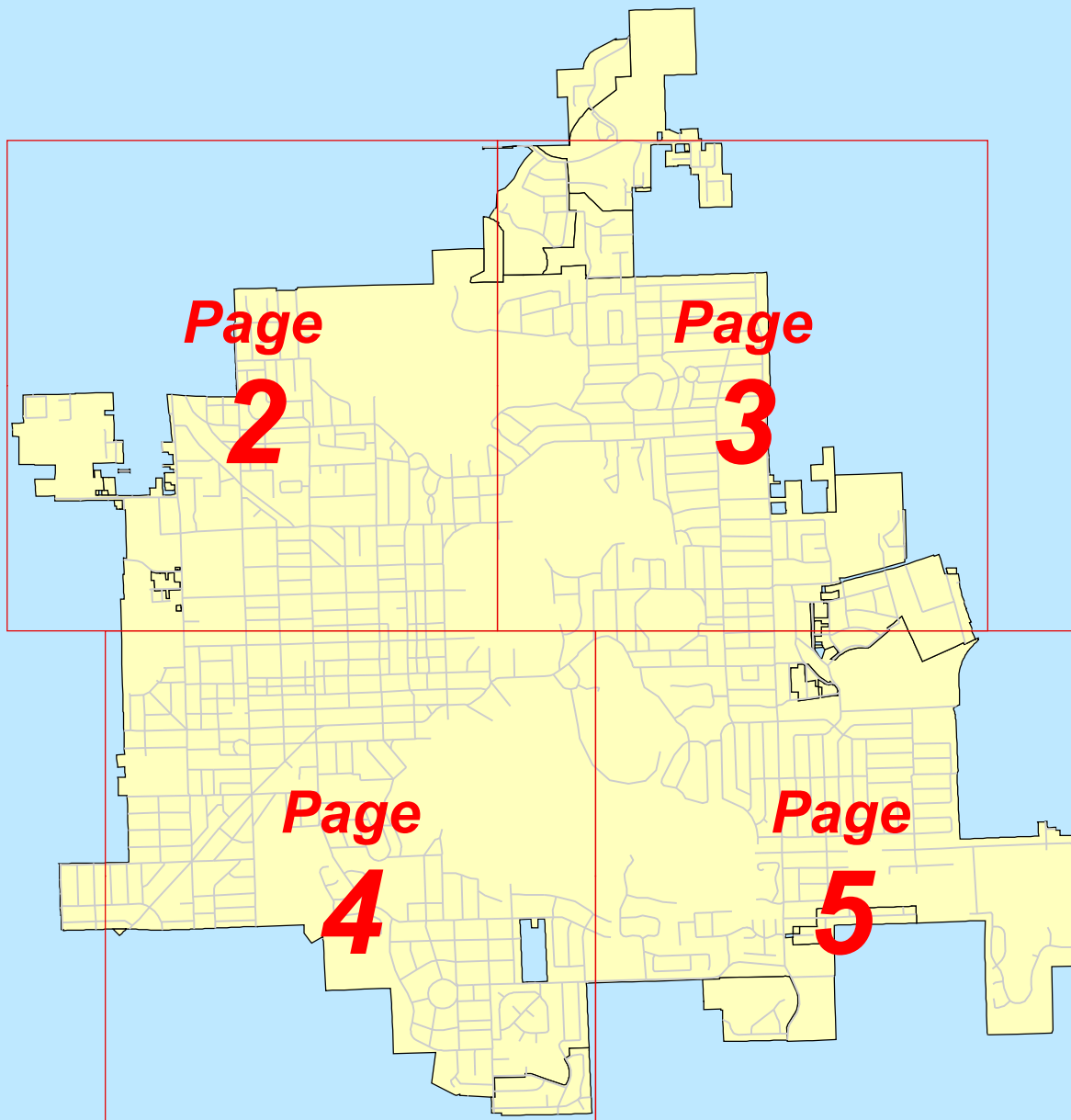


New Contents Tab



New Frame Properties



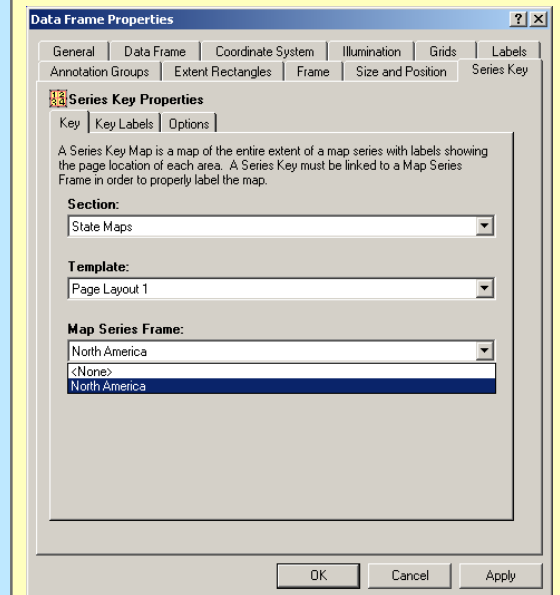


The Series Key Frame

The Series Key Frame shows the appropriate page for each area in a map book.

NOTE:

- The labels on a key map are flexible and are defined using an expression very similar to expressions used for labeling layers.
- The page numbers in a key map are dynamically corrected based on the position of a map series in the map book. In our example, the map series is correctly labeled as starting on page 2 because the key map is occupying page 1.
- The properties of a Series Key Frame are modified on the Series Key tab of the data frame properties.

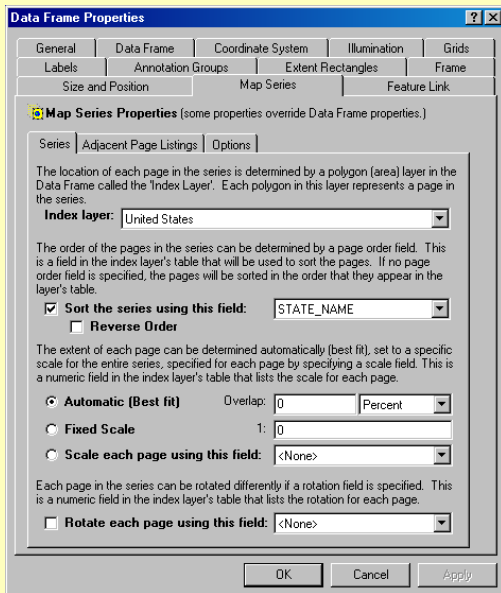


The Map Series Frame

The Map series Frame knows how to generate a number of maps based on areas defined by a polygon layer called the Index Layer. Each polygon in the Index Layer represents a page in the map series.

NOTE:

- There are many properties such as scale, rotation, sort order, overlap, adjacent page labels, that can be adjusted for a Map Series Frame.
- The properties of a Map Series Frame are modified on the Map Series tab of the data frame properties.



We have modified the first page of our map series with these notes without changing the rest of the series by using an "Alternate Template" for this page. You can also use alternate templates for odd and even pages for two sided printing.

The adjacent page labels are flexible and are defined using an expression very similar to expressions used for labeling layers (see examples at right). In our example map book we are just using the page number enclosed in a diamond marker.

Once the properties have been set, the extension automatically adds the labels when needed.

The Locator Frame is another specialized frame which highlights the location of the current page in a map series.

Once the properties have been set, the extension automatically updates the map as you move from page to page.

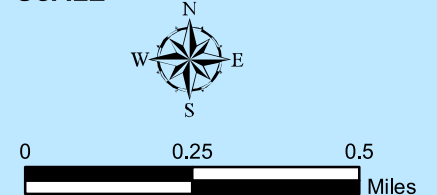
LEGEND

This is an example of a Series Text Element. Series text changes from page to page. The labels are flexible and are defined using an expression.

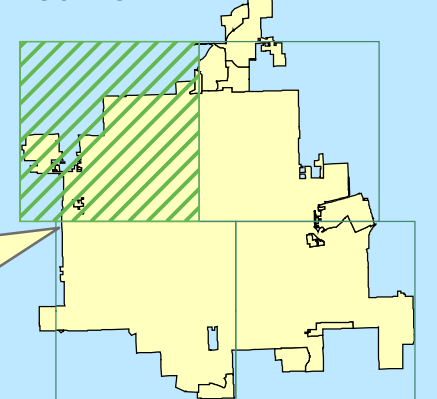
Once the properties have been set, the label is automatically updates as you move from page to page.

- Trade School
- Fire Stations
- Fire Hydrants
- Hospitals
- Railroads
- Winter Park City Limits

SCALE



LOCATOR



Continued on page 3

See NE Quadrant

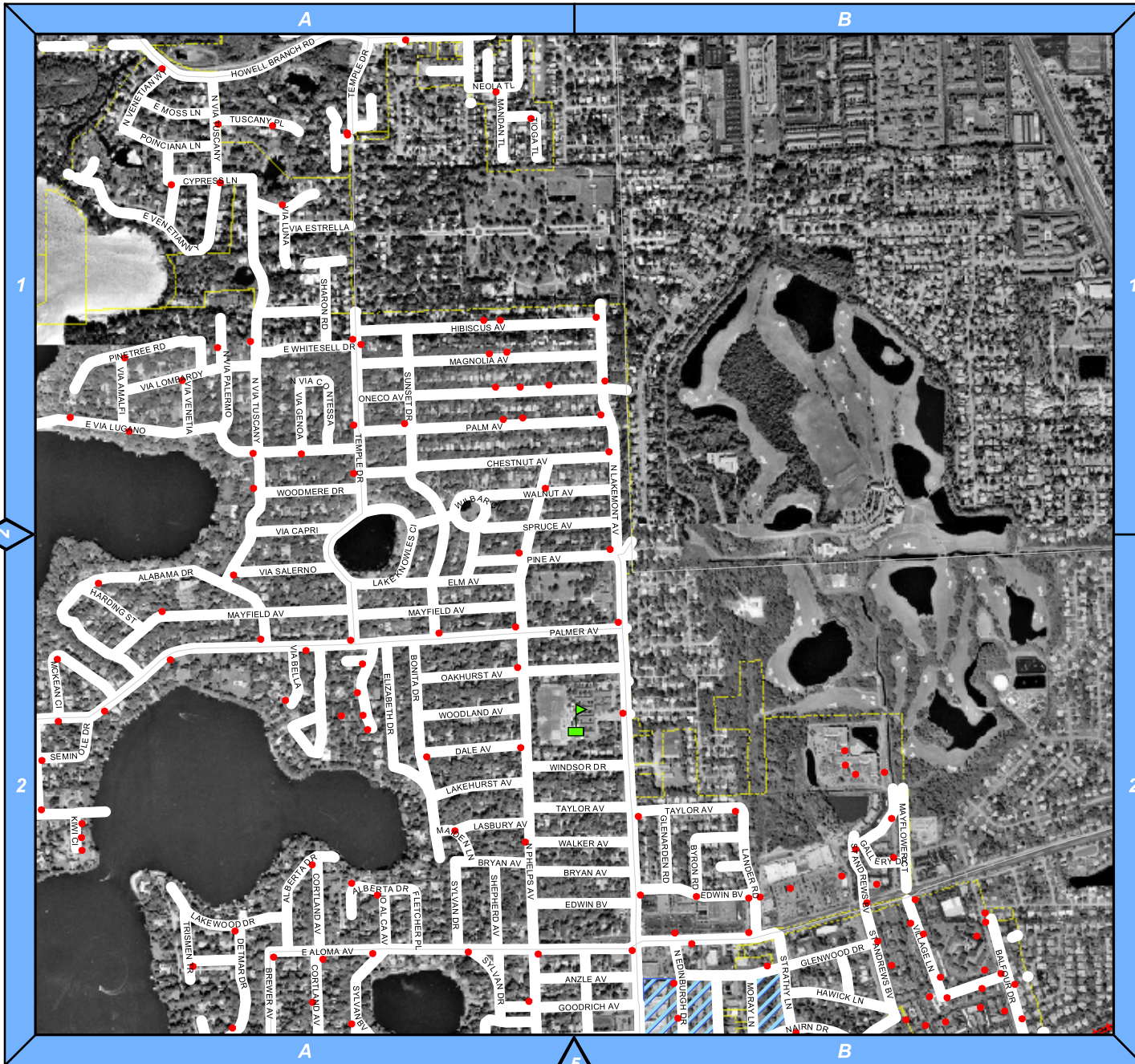
A

B

A

B

4



LEGEND

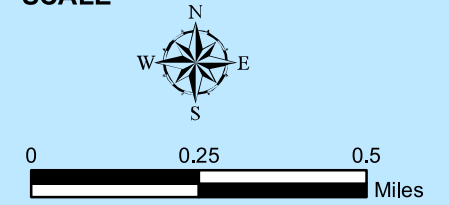
Schools

- K - 9
- Elementary
- High School
- Middle School
- Trade School

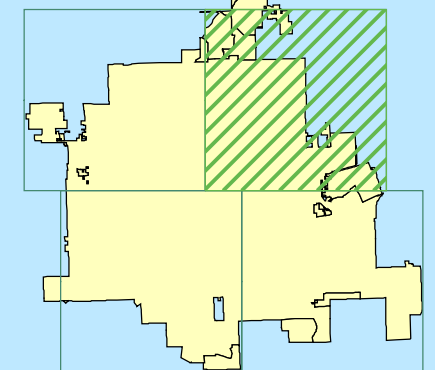
- Fire Stations
- Fire Hydrants

- Hospitals
- Railroads
- Winter Park City Limits

SCALE



LOCATOR





LEGEND

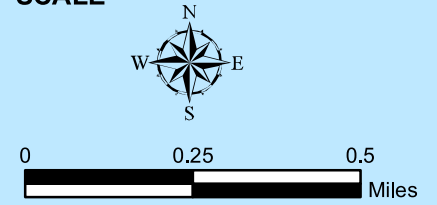
Schools

- K - 9
- Elementary
- High School
- Middle School
- Trade School

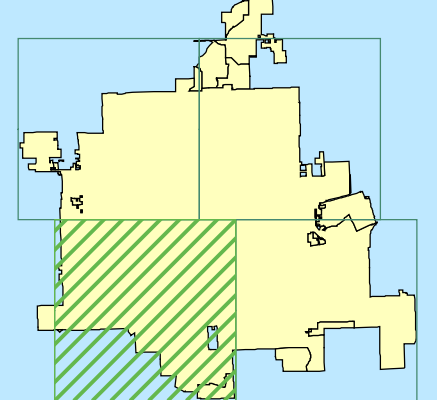
- Fire Stations
- Fire Hydrants

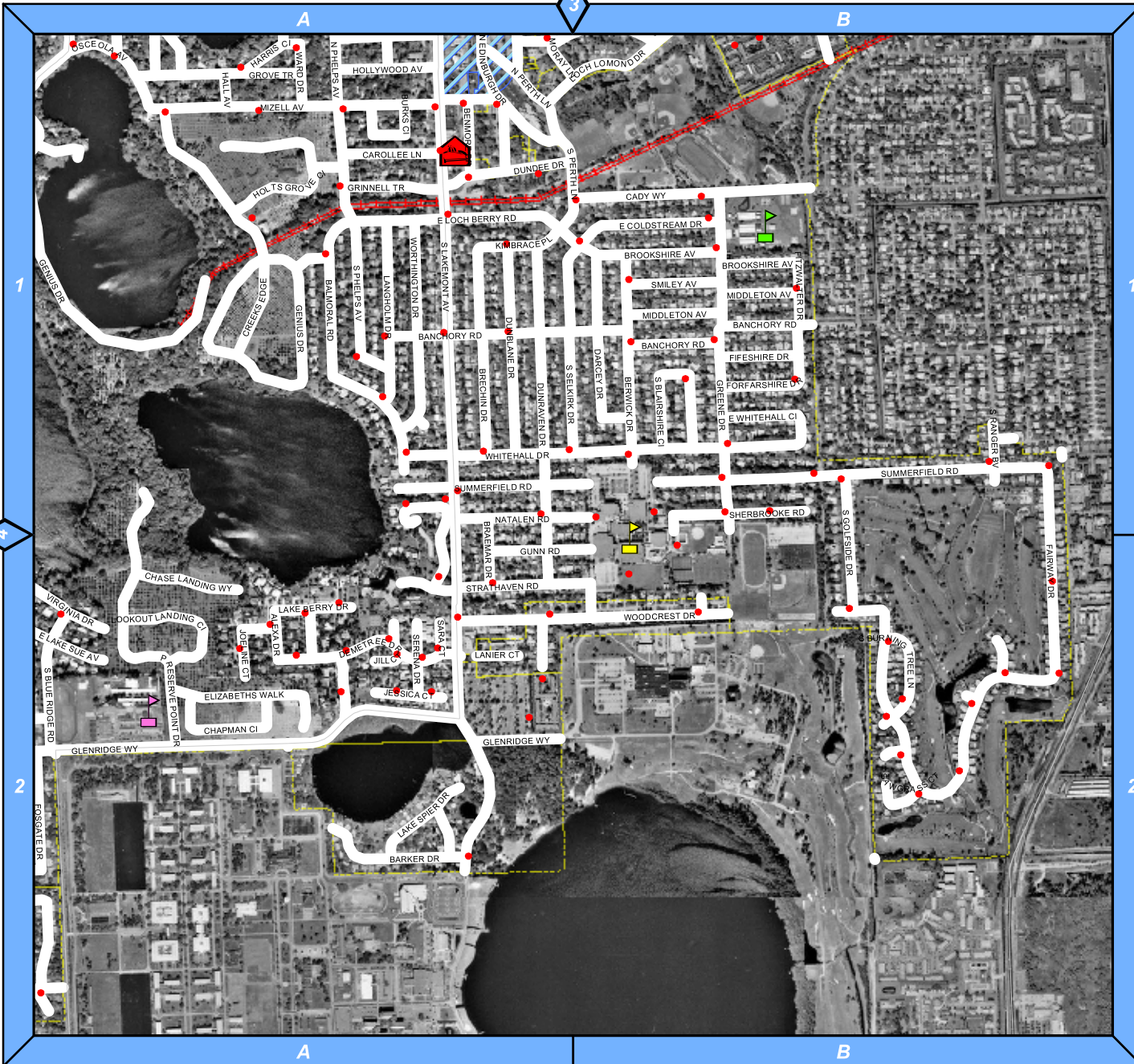
- Hospitals
- Railroads
- Winter Park City Limits

SCALE



LOCATOR





LEGEND

Schools

- K - 9
- Elementary
- High School
- Middle School
- Trade School

Fire Stations

Fire Hydrants

Hospitals

Railroads

Winter Park City Limits

SCALE

LOCATOR

INDEX OF ROADS (ABBEY - CYPRESS)

The Series Index

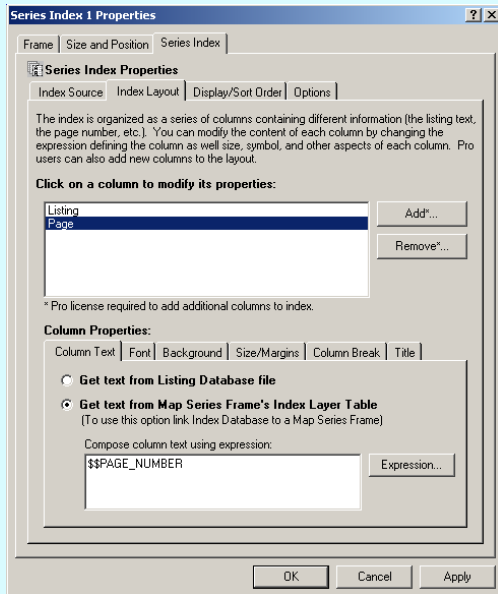
The Series Index Frame is a specialized frame which lists the location of features in a map series.

These listings are based on a database of feature locations created by the extension. You can extract information from different fields in the layer's table and place them in single or multiple columns.

NOTE:

- Column size, font, color, sort order, etc. are all adjustable.

- The properties of a Series Index Frame are modified on the Series Index tab of the frame properties.



	Street	Page	Grid
	BERWICK DR	5	1B
	BETT MAR LN	2	1B
S	BLAIRSHIRE CI	5	1B
S	BLUE RIDGE RD	4	2B
S	BLUE RIDGE RD	5	2A
	BONITA DR	3	2A
	BONNIE BURN CI	4	1A, 1B, 2A, 2B
	BRAEMAR DR	5	1A, 2A
	BRANDYWINE DR	4	2B
	BRECHIN DR	5	1A
	BREWER AV	3	2A
	BREWER AV	4	1B
	BREWER AV	5	1A
	BRIARWOOD DR	4	2B
	BRIDGEPORT DR	5	2A
	BROADVIEW AV	4	1A
	BROCK ST	2	1A, 1B
	BROOKSHIRE AV	5	1B
	BRUCE PL	4	1A
	BRYAN AV	3	2A, 2B
	BUCKINGHAM RD	4	1A, 2A
	BUNGALOW AV	4	1A
	BURKS CI	5	1A
S	BURNING TREE CT	5	2B
S	BURNING TREE LN	5	2B
	BYRON RD	3	2B
	C		
	CADY WY	5	1A, 1B
	CALLAHAN ST	2	2B
	CAMELLIA AV	4	2A
	CANTERBURY RD	4	1A, 2A
E	CANTON AV	2	2B
W	CANTON AV	2	2A, 2B
N	CAPEN AV	2	2B
N	CAPEN AV	4	1A

This is another example of a Series Text Element. Series text changes from page to page.

Page numbers are automatically corrected based on the position of the map sheet in the book.

You can choose to automatically combine multiple listings of the same feature.

You can alternate the background color to make the index more readable.

If the Map Series Frame has an index grid, you have the option of indexing the grid location of the feature as well.

Breaks can be automatically inserted when the first letter in listing changes.

You can index more than one attribute. For example, the road name, type, prefix, suffix, address range, etc.

	Street	Page	Grid
	CARDINAL CT	2	1B, 2B
	CAROLINA AV	2	2B
	CANTON AV	4	1A
	CANTON AV	5	1A
	CANTON AV	2	2A, 2B
	CANTON AV	4	1A, 2A
N	CANTON AV	2	2B
N	CANTON AV	4	1B
S	CENTER ST	4	1B
	CHANTILLY AV	3	1A
	CHATELAIN DR	4	1B
	CHATELAIN DR	5	2A
	CHATELAIN DR	4	1B
	CHASE LANDING WY	5	2A
	CHELTON CI	4	2B
	CHEROKEE AV	2	2A
	CHEROKEE LN	2	2B
	CHEROKEE LN	3	2A
	CHESTNUT AV	2	1A, 1B
	CHESTNUT AV	4	1A, 1B
	CHESTNUT AV	5	1A
	CHESTNUT AV	2	1A
W	COLE AV	2	2B
	COLLEGE PT	4	1B
E	COMSTOCK AV	4	1B
W	COMSTOCK AV	4	1A, 1B
	COMSTOCK AV	3	2A
	COMSTOCK AV	5	1A
	COMSTOCK AV	2	2A
	COVEY CV	4	2B
	CREEKS EDGE	5	1A
	CREEKS EDGE	2	1A
	CREEKS EDGE	4	1A
	CREEKS EDGE	4	1A

INDEX OF ROADS (CYPRESS - GROVE)

	Street	Page	Grid
W	CYPRESS LN	2	1B
W	CYPRESS LN	3	1A
	CYPRESS POINT LN	5	2B
D			
	DALE AV	3	2A
	DALLAS AV	4	1A
	DALMEN AV	2	2A
E	DANA WY	4	2B
W	DANA WY	4	2B
	DARCEY DR	5	1B
	DEMETREE DR	5	2A
N	DENNING DR	2	2A
N	DENNING DR	4	1A
S	DENNING DR	4	1A, 2A
	DEPUGH ST	2	2B
	DETMAR DR	3	2A
	DETMAR DR	4	1B
	DETMAR DR	5	1A
	DIANA DR	2	1A, 1B
	DIXIE PY	2	1A, 1B
	DIXON AV	2	2A
	DOUGLAS AV	4	1A
	DUNBAR ST	2	2B
	DUNBLANE DR	5	1A
	DUNDEE DR	5	1A, 1B
	DUNRAVEN DR	5	1A, 2A
	DURHAM AV	2	2A
E			
	EAST ADAMS DR	2	1B
	EAST ADAMS DR	3	1A
	EAST WINTER PARK RD	4	2B
	EASTOVER DR	5	2B
	EDGEWATER AV	3	1A
N	EDINBURGH DR	3	2B
N	EDINBURGH DR	5	1A

	Street	Page	Grid
S	EDINBURGH DR	5	1A
	EDWIN BV	3	2A, 2B
	ELIZABETH DR	3	2A
	ELIZABETHS WALK	5	2A
	ELLEN DR	2	2A
	ELM AV	3	2A
	ELVIN AV	2	2A
	ENGLEWOOD RD	4	2B
	ENGLISH CT	2	2A, 2B
	ERIE AV	2	2B
	ESSEX RD	4	1B
	EXECUTIVE DR	2	2A
F			
E	FAIRBANKS AV	4	1B
W	FAIRBANKS AV	4	1A, 1B
	FAIRFAX AV	4	1A, 1B
	FAIRVIEW AV	4	1A
	FAIRWAY DR	5	1B, 2B
	FAWSETT RD	4	2B
E	FAWSETT RD	4	2B
W	FAWSETT RD	4	2B
	FIFESHIRE DR	5	1B
	FITZWALTER DR	5	1B
	FLEET RD	3	2B
	FLETCHER PL	3	2A
	FOREST AV	4	1B, 2B
	FORFARSHIRE DR	5	1B
	FORREST RD	4	2B
	FOSGATE DR	4	2B
	FOSGATE DR	5	2A
	FRENCH AV	4	1B
	FRIENDS AV	2	2A
G			
	GAINES WY	2	1B
	GALLERY DR	3	2B

	Street	Page	Grid
	GALLERY VIEW BV	3	2B
	GALLOWAY DR	2	2A
	GARDEN DR	4	2A
	GARFIELD AV	2	2B
	GAY RD	2	2A
	GENE ST	4	1A
N	GENERAL REES AV	4	2B
N	GENERAL REES AV	5	2A
	GENIUS DR	4	1B
	GENIUS DR	5	1A
	GEORGIA AV	2	2B
	GEORGIA AV	3	2A
	GERMAINE DR	5	2A
	GIPSON GREEN LN	2	1A, 1B
	GLENARDEN RD	3	2B
	GLENCOE AV	4	1B, 2B
	GLENCOE RD	4	2B
	GLENDON PY	2	2A
	GLENRIDGE WY	4	2B
	GLENRIDGE WY	5	2A
	GLENWOOD DR	3	2B
S	GOLFSIDE DR	5	1B, 2B
	GOLFVIEW TR	2	2B
	GOODRICH AV	3	2A, 2B
	GORDON ST	4	1A
	GRANVILLE DR	2	1A, 2A, 2B
	GREEN COVE RD	2	1B, 2B
	GREEN OAKS CT	2	1B
	GREENE DR	5	1B
	GREENTREE DR	3	2A
	GREENWICH AV	3	2B
	GREENWICH AV	5	1A
	GRINNELL TR	5	1A
	GROUSE CT	4	2B
	GROVE AV	4	1A

INDEX OF ROADS (GROVE - MAGNOLIA)

	Street	Page	Grid
	GROVE TR	5	1A
	GROVER AV	4	2A
	GUNN RD	5	2A, 2B
	H		
	HALL AV	5	1A
	HAMPDEN PL	4	2B
E	HANNIBAL SQ	4	1A
W	HANNIBAL SQ	4	1A
	HARDING ST	2	2B
	HARDING ST	3	2A
	HARMON AV	4	1A
	HARPER ST	4	1A
	HARRIS AV	3	2A, 2B
	HARRIS AV	5	1A
	HARRIS CI	5	1A
	HAWICK LN	3	2B
	HENKEL CI	4	1B
	HENKEL CI	5	1A
	HIBISCUS AV	3	1A, 1B
	HIGHLAND RD	4	1B, 2B
	HILLCREST AV	4	1B, 2B
	HOLLYWOOD AV	5	1A
	HOLT AV	4	1A, 1B
	HOLTS GROVE CI	5	1A
E	HORATIO AV	3	1A
	HOWARD DR	4	2B
	HOWELL BRANCH RD	3	1A
	HUNTINGTON AV	4	1A, 1B
	HUNTINGTON CT	4	1A
	I		
	IBIS CT	2	1B, 2B
	ILLINOIS ST	4	1A
	INDIANA AV	4	1A
N	INTERLACHEN AV	2	2B
N	INTERLACHEN AV	4	1B

	Street	Page	Grid
S	INTERLACHEN AV	4	1B
	ISLE OF SICILY	2	1B
	ISLE OF SICILY	3	1A
	J		
	JANICE AV	4	2B
	JESSICA CT	5	2A
	JILL CT	5	2A
	JO AL CA AV	3	2A
	JOELINE CT	5	2A
	JOHN PL	2	2B
	JUANITA RAE	2	1A, 1B
	K		
E	KAHKWA CT	5	2B
	KELLY PL	4	1A
	KENWOOD AV	2	2A, 2B
	KEYES AV	2	2B
	KILLARNEY BAY CT	2	2A
	KILLARNEY DR	4	1A
	KIMBRACE PL	5	1A
	KINDEL AV	2	2A
E	KINGS WY	4	2B
W	KINGS WY	4	2B
	KIWI CI	2	2B
	KIWI CI	3	2A
N	KNOWLES AV	2	2B
N	KNOWLES AV	4	1B
S	KNOWLES AV	4	1B
	L		
	LAFAYETTE AV	3	1A
	LAKE BERRY DR	5	2A
	LAKE HOWELL RD	3	1B, 2B
	LAKE KNOWLES CI	3	1A, 2A
	LAKE SHORE DR	4	2A
	LAKE SPIER DR	5	2A
E	LAKE SUE AV	4	2B

	Street	Page	Grid
E	LAKE SUE AV	5	2A
W	LAKE SUE AV	4	2B
	LAKEHURST AV	3	2A
N	LAKEMONT AV	3	1B, 2B
N	LAKEMONT AV	5	1A
S	LAKEMONT AV	5	1A, 2A
	LAKEMONT CI	5	1A, 2A
	LAKEVIEW AV	4	1A
	LAKEVIEW DR	4	1B
	LAKEWOOD DR	3	2A
	LANDER RD	3	2B
	LANGHOLM DR	5	1A
	LANIER CT	5	2A
	LASBURY AV	3	2A
	LAUREL RD	4	2B
	LAYTON DR	5	1B
	LEE RD	2	2A
	LEGION DR	2	1B
	LEITH AV	4	2A
	LEWIS DR	2	2A
	LINCOLN AV	2	2B
	LINCOLN CI	2	2B
	LINDENWOOD LN	5	2A
E	LOCH BERRY RD	5	1A, 1B
	LOCH LOMOND DR	3	2B
	LOCH LOMOND DR	5	1A, 1B
	LOOKOUT LANDING CI	5	2A
	LOREN AV	2	2A
	LOUISIANA AV	2	2A
E	LYMAN AV	4	1B
W	LYMAN AV	4	1A, 1B
	LYNDALE BV	2	2A
	LYNWOOD LN	5	2A
	M		
	MAGNOLIA AV	3	1A, 1B
	MAGNOLIA RD	2	1A

INDEX OF ROADS (MAIDEN - RAILROAD)

	Street	Page	Grid
	MAIDEN LN	3	2A
	MALLARD CI	4	2B
	MANDAN TL	3	1A
	MARGARET SQ	2	2A
	MARYLAND AV	4	1A, 1B
	MAYFIELD AV	2	2B
	MAYFIELD AV	3	2A
	MAYFLOWER CT	3	2B
	MCINTYRE AV	4	1A
	MCKEAN CI	2	2B
	MCKEAN CI	3	2A
	MEAD AV	4	1A, 2A
E	MEDINAH CT	5	2B
	MELISSA CT	5	2A
	MELROSE AV	4	1A, 1B
	MERRIE OAKS RD	3	2B
	MERRIE OAKS RD	5	1B
	MICHIGAN AV	4	1A
	MIDDLETON AV	5	1B
	MIDGET DR	4	1A
	MILES AV	4	1A
	MILLER AV	4	1A
	MINNESOTA AV	4	1A
	MISTY LN	2	2B
	MIZELL AV	5	1A
	MORAY LN	3	2B
	MORAY LN	5	1A, 1B
E	MORSE BV	4	1B
W	MORSE BV	4	1A, 1B
E	MOSS LN	3	1A
	MULBRY DR	4	2B
	MULBRY DR	5	2A
	N		
	NAIRN DR	3	2B
	NAIRN DR	5	1A, 1B
	NATALEN RD	5	1A, 1B

	Street	Page	Grid
	NEOLA TL	3	1A
E	NEW ENGLAND AV	4	1B
W	NEW ENGLAND AV	4	1A, 1B
N	NEW YORK AV	2	2B
N	NEW YORK AV	4	1B
S	NEW YORK AV	4	1B
	NORFOLK AV	4	2A
	NORRIS AV	4	2B
	NORTH KENTUCKY AV	4	1A
	NORTHWOOD CI	2	2B
	O		
W	OAK GROVE CT	2	2A
	OAK GROVE RD	2	2A
	OAK PL	4	1A
	OAKHURST AV	3	2A, 2B
	OAKS BV	2	2B
	OAKWOOD WY	4	2B
	OLD ENGLAND AV	2	2B
	OLD HOWELL BRANCH RD	2	1B
	OLD HOWELL BRANCH RD	3	1A
	OLLIE AV	4	1B
	ONECO AV	3	1A, 1B
	ORANGE AV	4	1A, 2A
	ORCHID AV	4	1A, 2A
N	ORLANDO AV	2	2A
N	ORLANDO AV	4	1A
S	ORLANDO AV	2	2A
S	ORLANDO AV	4	1A, 2A
	OSCEOLA AV	4	1B
	OSCEOLA AV	5	1A
	OSCEOLA CT	4	1B
	OVERLOOK RD	3	2A
	OVERLOOK RD	5	1A
	OXFORD RD	4	1B
	P		

	Street	Page	Grid
	PALM AV	3	1A, 1B
	PALMER AV	2	2B
	PALMER AV	3	2A, 2B
	PALMETTO AV	4	1A
	PANSY AV	2	2A, 2B
N	PARK AV	2	2A, 2B
N	PARK AV	4	1B
S	PARK AV	4	1B
	PARK GREEN PL	2	2A
	PARK NORTH CT	2	2B
	PARK NORTH PL	2	2B
	PARK POINTE LN	3	1A
	PARKLAND CI	4	2B
	PARKLAND CT	4	2B
	PARKLAND CT	5	2A
	PARKLAND DR	4	2B
	PARKLAND DR	5	2A
	PELHAM RD	4	1A, 2A
N	PENNSYLVANIA AV	2	2B
N	PENNSYLVANIA AV	4	1A
S	PENNSYLVANIA AV	4	1A, 1B, 2A, 2B
N	PERTH LN	5	1A
S	PERTH LN	5	1A, 1B
N	PHELPS AV	3	1A, 2A
N	PHELPS AV	5	1A
S	PHELPS AV	5	1A
	PHILLIPS PARK CT	4	2B
	PINE AV	3	2A, 2B
	PINETREE RD	2	1B
	PINETREE RD	3	1A
	POINCIANA LN	3	1A
	POINTER PL	4	2B
	PRESERVE POINT DR	5	1A, 2A
	R		
	RAILROAD AV	2	2A, 2B

INDEX OF ROADS (RAINTREE - VILLAGE)

10

	Street	Page	Grid
	RAINTREE CT	2	2B
	RAINTREE PL	2	2B
	RANDALL CI	4	2B
	RANDALL RD	4	2B
E	RANDY LN	4	2B
E	RANDY LN	5	2A
S	RANGER BV	5	1B
E	READING WY	4	2B
W	READING WY	4	2B
	RICHMOND RD	4	1B
	RIDGEWOOD AV	2	2A
N	RIDGEWOOD AV	2	2A
E	ROCKWOOD WY	4	2B
W	ROCKWOOD WY	4	2B
	ROUNDELAY LN	3	2A
	ROUNDELAY LN	5	1A
	S		
	SALVADOR SQ	4	2A, 2B
	SANDLEWOOD TL	3	1A
	SANDWELL DR	5	1B
	SANTIAGO DR	4	2A, 2B
	SARA CT	5	2A
	SAWGRASS CT	5	2B
	SCHULTZ AV	4	1A
S	SELKIRK DR	5	1A, 1B
	SEMINOLE DR	2	2B
	SEMINOLE DR	3	2A
	SERENA DR	5	2A
	SETTER TL	4	2B
	SEYMOUR AV	3	2A
	SHARON PL	3	1A
	SHARON RD	3	1A
	SHEPHERD AV	3	2A
	SHERBROOKE RD	5	1B
	SHILOH LN	4	2B
	SHOREVIEW AV	4	1A

	Street	Page	Grid
	SMILEY AV	5	1B
	SOLANA AV	2	2A
	SOUTH KENTUCKY AV	4	1A
	SPRING LN	4	2B
	SPRUCE AV	3	1A, 1B, 2A
	ST ANDREWS BV	3	2B
	ST GEORGE ST	5	2A
	STEWART ST	2	2B
	STIRLING AV	4	1B
	STONEHURST RD	4	2B
E	STOVIN AV	2	2B
W	STOVIN AV	2	2B
	STRATHAVEN RD	5	2A, 2B
	STRATHY LN	3	2B
	SUFFOLK RD	4	1A, 2A
	SUMMER WIND DR	5	1B
	SUMMER WY	2	1B
	SUMMERFIELD RD	5	1A, 1B
	SUMMERLAND AV	2	1B, 2B
	SUNNYSIDE DR	2	1A, 2A
	SUNSET DR	3	1A, 2A
E	SWOOPE AV	2	2B
W	SWOOPE AV	2	2A, 2B
	SYLVAN BV	3	2A
	SYLVAN BV	5	1A
	SYLVAN DR	3	2A
	SYMONDS AV	2	2A, 2B
	T		
	TANTUM AV	2	2B
	TAYLOR AV	3	2A, 2B
	TEMPLE DR	3	1A, 2A
	TEMPLE GROVE CT	3	2A
	TEMPLE GROVE	3	2A
	TEMPLE TL	3	1A
S	THISTLE LN	2	1B

	Street	Page	Grid
S	THISTLE LN	3	1A
	TIOGA TL	3	1A
	TOM GURNEY DR	3	1A
	TRISMEN TR	3	2A
	TRISMEN TR	4	1B
	TROVILLION AV	2	2A
	TRUMAN RD	5	2B
	TURKEY RN	4	2B
	TUSCANY PL	3	1A
	TYREE LN	3	2B
	V		
	VALENCIA AV	2	2B
	VALERA CT	4	2A
E	VENETIAN WY	2	1B
E	VENETIAN WY	3	1A
N	VENETIAN WY	2	1B
N	VENETIAN WY	3	1A
	VERONA TL	3	1A
	VIA AMALFI	3	1A
	VIA BELLA	3	2A
	VIA CAPRI	3	1A, 2A
N	VIA CONTESSA	3	1A
E	VIA DEL MAR	3	1A
	VIA ESTRELLA	3	1A
	VIA GENOA	3	1A
	VIA LOMBARDY	3	1A
E	VIA LUGANO	2	1B
E	VIA LUGANO	3	1A
	VIA LUNA	3	1A
	VIA MERANO CT	3	1A
N	VIA PALERMO	3	1A
	VIA SALERNO	3	2A
	VIA SIENNA	3	1A
N	VIA TUSCANY	3	1A, 2A
	VIA VENETIA	3	1A
	VILLAGE LN	3	2B

INDEX OF ROADS (VIRGINIA - YORKSHIRE)

	Street	Page	Grid
N	VIRGINIA AV	2	2B
N	VIRGINIA AV	4	1A, 1B
S	VIRGINIA AV	4	1A, 1B
	VIRGINIA CT	4	1B
	VIRGINIA DR	4	1B, 2B
	VIRGINIA DR	5	2A
	VITORIA AV	4	1B
	W		
	WALKER AV	3	2A, 2B
	WALNUT AV	3	1A, 1B
	WARD AV	4	1A
	WARD DR	5	1A
	WASHINGTON AV	4	1A
	WATERFALL LN	2	2B
E	WEBSTER AV	2	2B
E	WEBSTER AV	3	2A
W	WEBSTER AV	2	2A, 2B
E	WELBOURNE AV	4	1B
W	WELBOURNE AV	4	1A, 1B
	WEST END DR	4	2B
	WEST PARK AV	2	2B
	WEST PARK AV	4	1B
W	WESTCHESTER AV	4	2A
	WHIPPLE AV	2	2B
E	WHITEHALL CI	5	1B
	WHITEHALL DR	5	1A, 1B
E	WHITESSELL DR	3	1A
	WILBAR CI	3	1A, 2A
	WILLARD AV	2	2A
	WILLIAMS DR	2	1B, 2B
	WILMA AV	2	2A
	WINCHESTER DR	4	2B
	WINDSOR DR	3	2A, 2B
	WING LN	4	2B
	WINTER PARK RD	4	2B
	WISCONSIN AV	4	1A

	Street	Page	Grid
	WOODCREST DR	5	2A, 2B
	WOODDALE AV	3	1A, 2A
	WOODLAND AV	3	2A
	WOODMERE DR	3	1A
	WORTHINGTON CT	5	1A
	WORTHINGTON DR	5	1A
	WRIGHT AV	4	2B
	Y		
	YORKSHIRE DR	3	2B



MapLogic

**MapLogic Corporation
330 W Canton Avenue
Winter Park, FL 32789 USA
TEL: 407-657-1250
FAX: 407-657-7008
E-Mail: marketing@maplogic.com
WEB: www.maplogic.com**